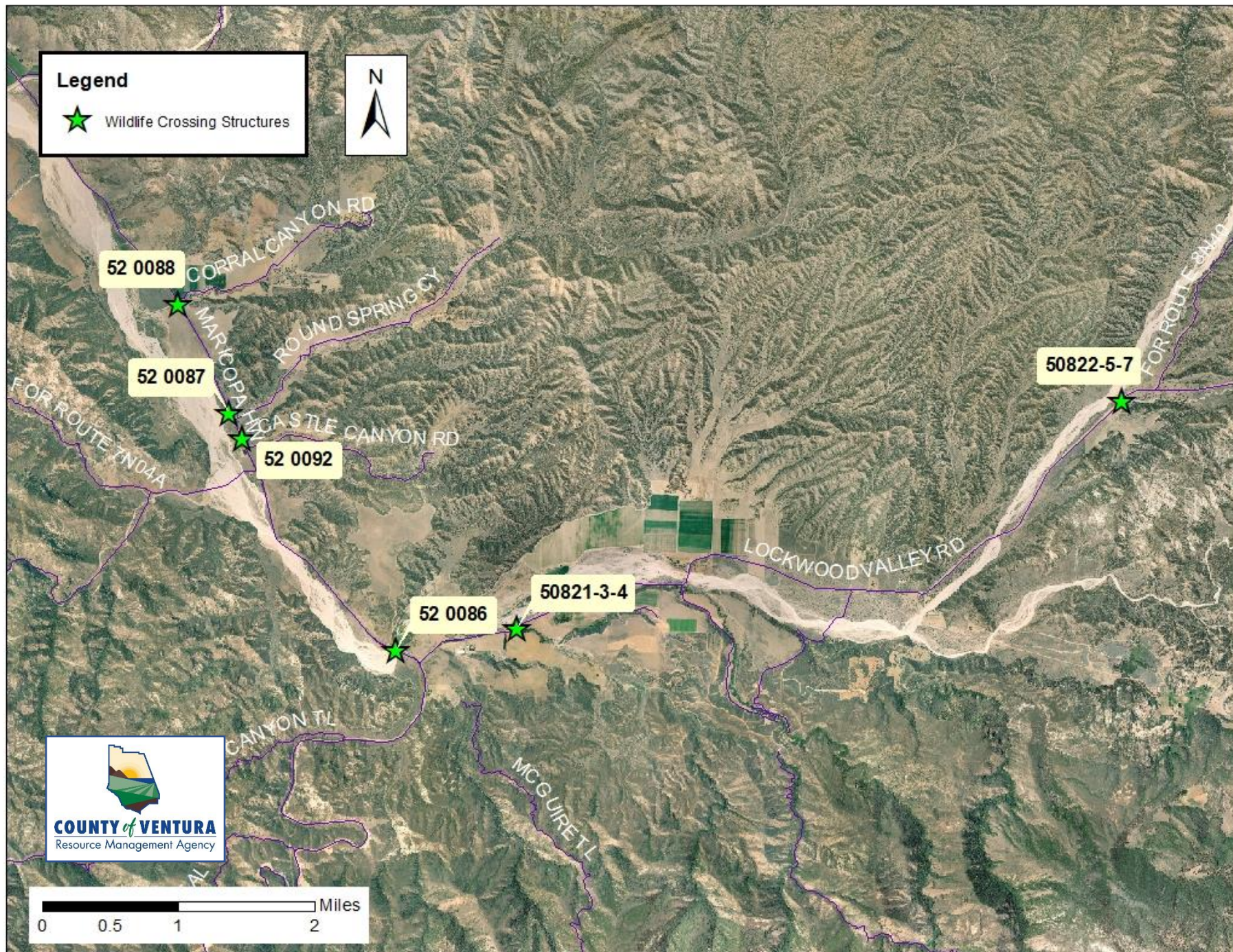


EXHIBIT 8

Wildlife Crossing Structure Detail Maps Located in the Cuyama River and Lockwood Valley Area

Proposed Ordinance Establishing Setbacks from 16
Wildlife Crossing Structures in the Northern Portion of
the Ventura County Unincorporated Area

[This page is intentionally left blank]



● Wildlife Road Crossing Structure

□ 200-ft Setback Area*

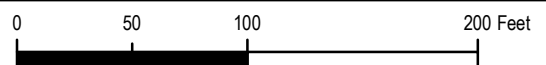
▬ Parcels/Property Lines

003014018 Assessor's Parcel Number (APN)

** Locations are approximate; not intended to represent a regulatory boundary. See Ventura County Non-Coastal Zoning Ordinance Section 8106-6.5 for applicable regulations.*



Source: Esri, Maxar, Earthstar Geographics, and the GIS User Community



● Wildlife Road Crossing Structure

□ 200-ft Setback Area*

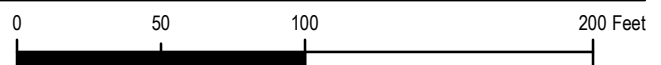
▤ Parcels/Property Lines

003014018 Assessor's Parcel Number (APN)

** Locations are approximate; not intended to represent a regulatory boundary. See Ventura County Non-Coastal Zoning Ordinance Section 8106-6.5 for applicable regulations.*



Source: Esri, Maxar, Earthstar Geographics, and the GIS User Community



● Wildlife Road Crossing Structure

□ 200-ft Setback Area*

▬ Parcels/Property Lines

003014018 Assessor's Parcel Number (APN)

** Locations are approximate; not intended to represent a regulatory boundary. See Ventura County Non-Coastal Zoning Ordinance Section 8106-6.5 for applicable regulations.*

0020080215

0020080235

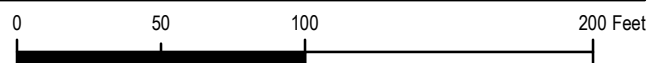
0020080285

0020100040

0020100140

0020100050

Source: Esri, Maxar, Earthstar Geographics, and the GIS User Community



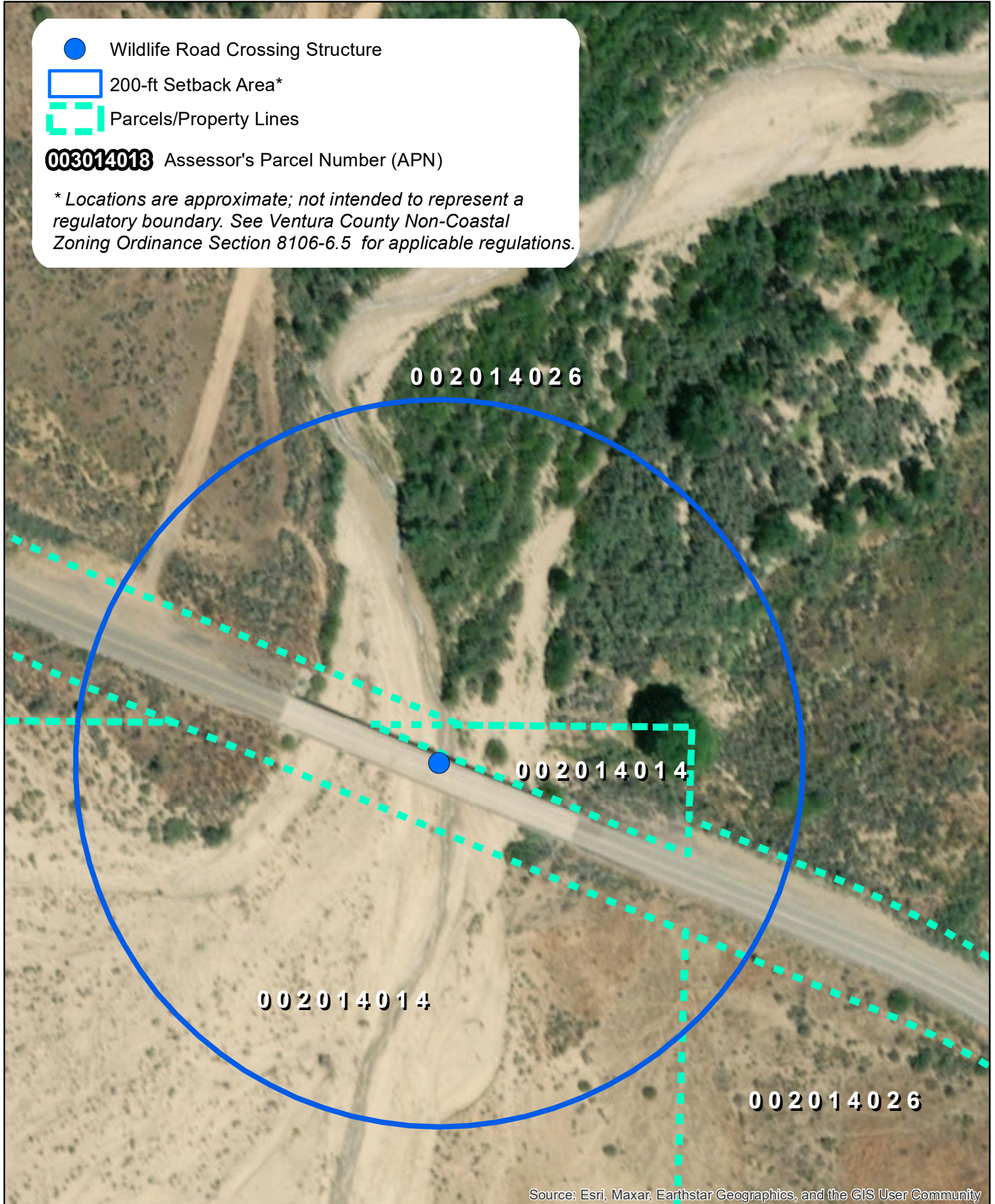
● Wildlife Road Crossing Structure

□ 200-ft Setback Area*

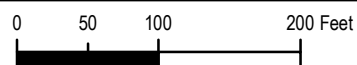
▤ Parcels/Property Lines

003014018 Assessor's Parcel Number (APN)

** Locations are approximate; not intended to represent a regulatory boundary. See Ventura County Non-Coastal Zoning Ordinance Section 8106-6.5 for applicable regulations.*



Source: Esri, Maxar, Earthstar Geographics, and the GIS User Community



● Wildlife Road Crossing Structure

□ 200-ft Setback Area*

▤ Parcels/Property Lines

003014018 Assessor's Parcel Number (APN)

** Locations are approximate; not intended to represent a regulatory boundary. See Ventura County Non-Coastal Zoning Ordinance Section 8106-6.5 for applicable regulations.*

0020140075

0020140075

Source: Esri, Maxar, Earthstar Geographics, and the GIS User Community





Wildlife Road Crossing Structure



200-ft Setback Area*

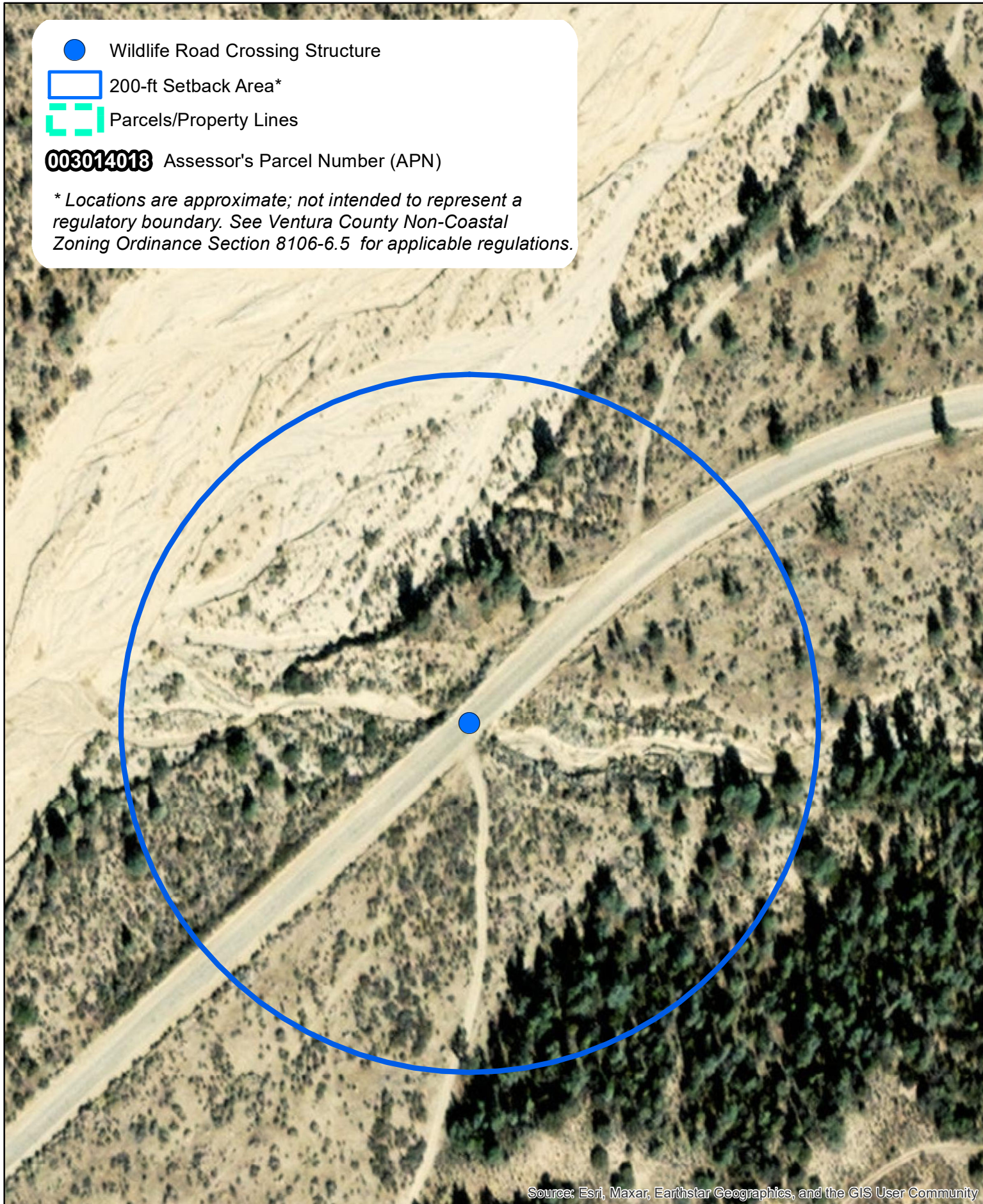


Parcels/Property Lines

003014018

Assessor's Parcel Number (APN)

** Locations are approximate; not intended to represent a regulatory boundary. See Ventura County Non-Coastal Zoning Ordinance Section 8106-6.5 for applicable regulations.*



Source: Esri, Maxar, Earthstar Geographics, and the GIS User Community

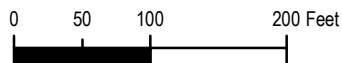


COUNTY of VENTURA
Resource Management Agency

Final map created on 9/29/2022



County Culvert ID:
50822-5-7 & ~ 200 Foot
Setback Area



Disclaimer: this map was created by the Ventura County Resource Management Agency Information Systems GIS, which is designed and operated solely for the convenience of the County and related public agencies. The County does not warrant the accuracy of this map and no decision involving a risk of economic loss or physical injury should be made in reliance therein